



Hoist Eye 360[®]

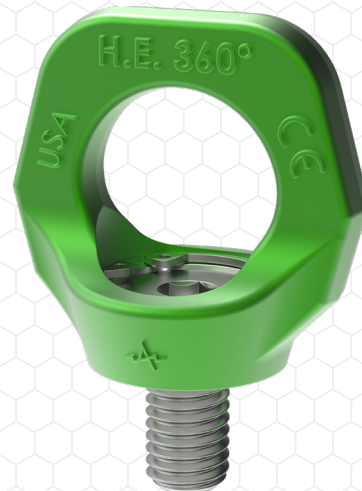
Hoist Eye 360[®] is a forged lifting eye that can be rotated 360° after installation, to align with pulling-force direction. This compact assembly features a specially designed shoulder bolt, which rotates freely in the precisely machined forged lifting-eye body and is held captive by a retaining ring.

For part charts and additional product information, please see our website.



Unlike conventional lifting eyes, Hoist Eye 360® can be used at full rated load capacity when pulling at any angle 0 to 90° from the bolt axis. Available with thread sizes from 3/8-16 to 1"-8. Complies with ASME B30.26 specifications. 200% proof load tested and individually serialized.

- **Greatest safety factor on the market = 5:1**
- **Exceeds ASME B30.26**
- **Replaceable mounting bolt**
- **Corrosion resistant zinc plating & high visibility powder coat finish for superior corrosion resistance**
- **Made in USA**



PLEASE NOTE: Hoist Eye 360® is suitable for applications where all lifting-eye rotation takes place before lifting begins, with no swivel action occurring while under load. For applications that require swiveling under load, use a Swivel Hoist Ring instead.